



RADIO-ACTIVE!

January 16, 2023, Volume 2, Issue 1



2023 Starts Off With A Bang



Hwy 9 in Ben Lomond Mudslide

The weather has been on everyone’s mind since the end of 2022 and through these first sixteen days of January. No one has been immune in Santa Cruz County with the variety of rain, wind (including a bomb cyclone), floods, debris flows, mudslides, trees falling, wires down, water main breaks, extended power outages, building and wharf destruction, levee breaches, and road closures, washouts, sinkholes and collapses.

Santa Cruz County declared a local disaster on January 3rd while in the midst of the activity. And then formally requested assistance from the State of California and the federal government on January 13th to assist with the losses and emergency repairs. On January 14th President Biden approved the disaster declaration. Initial damage assessments are exceeding \$55 million and are expected to rise significantly. These declarations assist individuals and business owners recover from the effects of the disaster through various offered programs.

The Santa Cruz County Emergency Operations Center has been operating for these past seventeen days at a Level 1. This means the Emergency Operations Center has been staffed in-person for 8—12 hours per day at the Santa Cruz County Sheriffs building complex at 5200 Soquel Avenue, Santa Cruz. Also there is a duty officer available after hours. There have been many, many zoom meetings trying to coordinate the many organizations involved in the disaster response. John, N6QX and Karen, KM6SV have been attending one of these daily calls to keep well-informed of response plans.

The intensity and veracity of this atmospheric river event has kept many of us close to the ham radios hungry for information and communication. The radios have been pulled out of the closets, dusted off and recharged. Many of the frequencies have come alive with chatter of local information updates. The SLV ARES Net of Wednesday, January 11 had one its record check-in volumes of 48 operators. Many operators have volunteered their time and expertise to support the first responders. This newsletter contains many elements of the activities surrounding this weather event.



Capitola wave action

Inside this issue

- Net Control Corner2
- Events Save the Dates2
- Equipment Loans..... ..2
- Deployment Cooperation..3
- Working with a Fire Dept ..4
- Situational Awareness.....5
- Hours Corner6
- Trainer Observations..... ..6
- Neighborhood Radio7
- Disaster Spurs Creativity ...8
- Critical Evacuation Info9
- Found on the Web10

Events Save the Dates

- TBD: Scavenger Around Field Exercise (SAFE 2023)
- Sunday, May 21, 2023:
Strawberry Fields Forever
Bike Ride

Equipment available to loan

Santa Cruz Communications Support have two kits available for loaning to allow ham operators participate in a deployment when they have limited equipment. One kit is for a vehicle deployment and includes Mobile dual-band radio Icom IC-2730, mag mount antenna, battery and kneeboard. The other kit is for stationary outdoor deployments and includes the vehicle kit with additional supplies of a tripod antenna, lighting, and pop-up. More details at the upcoming meeting.

Net Control Corner

Roberta, AJ6KN, Net Control Manager

I am excited to report some astounding (to me) numbers for this past year. In looking back over the Net Control Stations who have volunteered for the SLV ARES Net on Wednesday night and Coastal ARES Net on Thursday nights, I was surprised to find such a large number of volunteers! A big thanks to all NCS volunteers (listed below) and participants of the Nets. There were several new NCS this year, and we can look forward to a wide range and diverse group again in 2023. We look forward to continued participation of these and more incoming folks as our ranks grow stronger! I am always happy to help facilitate YOU in your first or ongoing net control ventures.

THANK YOU, NET CONTROL STATIONS OF 2022!

SLV NCS 2022 (16)

- | | | |
|---------------------|-------------------|-----------------|
| ▶ AC3T, Christian | ▶ KK6NNB, Mikail | ▶ KN6MLK, Debra |
| ▶ AJ6KN, Roberta | ▶ KM6RMN, Allison | ▶ KO6XX, Bob |
| ▶ AJ6QY, Alex | ▶ KM6SV, Karen | ▶ N6RJX, Dan |
| ▶ KE6AFE, Cap | ▶ KM6URE, JoMarie | ▶ WE6C, Roxy |
| ▶ KI6UAP, Ryan | ▶ KN6DCA, John | |
| ▶ KK6FBF, Sebastian | ▶ KN6IAB, Lisa | |

COASTAL NCS 2022 (19)

- | | | |
|-------------------|-----------------|------------------|
| ▶ AJ6CQ, Bill | ▶ KM6YHC, Rob | ▶ KN6PAC, Ken |
| ▶ AJ6KN, Roberta | ▶ KM6YHE, Vince | ▶ N6QX, John |
| ▶ KE6AFE, Cap | ▶ KN6DBR, Bruce | ▶ NS6K, John |
| ▶ KM6HGI, Debra | ▶ KN6IAB, Lisa | ▶ W6AJR, Patrick |
| ▶ KM6NEP, Stephen | ▶ KN6MLK, Debra | ▶ W6GMG, Gary |
| ▶ KM6SV, Karen | ▶ KN6NCG, Jim | |
| ▶ KM6THA, Nate | ▶ KN6NDM, Ben | |

In addition, we started taking Winlink Check-ins in November and have had great participation in this as well as in our SCCARES Winlink Net. Thank you to all of you who were able to do a Winlink check-in for a net. You do NOT have to be a Winlink registrant to participate. You can use your regular email server, put the [NCS call sign@winlink.org](mailto:NCS.call.sign@winlink.org) in the TO box, and in the Subject, put //WL2K followed by the rest of your subject. **For example, to: AJ6KN@winlink.org** **Subject: //WL2k Winlink check in.** Just one more way to ensure communication during an emergency. Please contact me if you'd like more information in registering with Winlink and joining our SCCARES Winlink Net.

THANK YOU, SLV AND COASTAL NET WINLINK CHECK-INS FOR 2022 (21)

- | | | |
|------------------|---------------------|----------------|
| ▶ AJ6CQ, Bill | ▶ KE6FRA, Elaine | ▶ KN6IAB, Lisa |
| ▶ AJ6KN, Roberta | ▶ KK6FBF, Sebastian | ▶ KN6NCG, Jim |
| ▶ AJ6QY, Alex | ▶ KM6HGI, Debra | ▶ KN6NDM, Ben |
| ▶ KC6EJS, Eric | ▶ KM6URE, JoMarie | ▶ KN6PAC, Ken |
| ▶ KC6MRU, Kasey | ▶ KM6YHE, Vince | ▶ KN6UZL, Rich |
| ▶ KE6AFE, Cap | ▶ KN6DBR, Bruce | ▶ NS6K, John |
| ▶ KE6BQA, Ann | ▶ KN6DBW, Mark | ▶ W6MLB, Mike |

Deployment Cooperation!

Karen, KM6SV, Assistant DEC and Deputy EC

At the very northern edge of Santa Cruz County, off of Highway 1, is an area called Whitehouse Canyon. On Jan 2, 2023, the Santa Cruz County Sheriff's Office (SO) determined that the single road leading into Whitehouse Canyon (Whitehouse Canyon Road) would likely wash out in the next storm. Facing staffing limitations, SO asked for assistance from the Community Emergency Response Team (CERT) to notify this area that they were being issued an evacuation order to begin at 5pm on Jan 3.

CERT was, rightfully, concerned that communications would be very difficult in the area. So CERT reached out to ARES for assistance with communications, and also to inquire if we had anyone with a vehicle appropriate for the road that needed to be traversed (4x4).

After getting the request from CERT, and disseminating it to our membership, ARES leadership thought that Equine Evac might have more people with vehicles appropriate for the road. Also, of concern, what if there were animals in the area needing evacuation assistance? After being contacted by ARES, Equine Evac reached out to contacts that they had in the area and determined that there were indeed some animals in need of evacuation. Specifically one horse and several pygmy goats.

So CERT came up with a plan to get a vehicle into the area to deliver evacuation notices. Equine Evac came up with a plan to evacuate the livestock in the area (involving the horse owner walking her horse 3 miles or more down the road to meet the trailer, as due to the condition of the road a horse trailer could not make it all the way in). And ARES came up with a communications plan to support both activities.

But as much as we can plan, we often don't know for sure how communications will be until we get there. Whitehouse Canyon was no exception to this rule, especially as the repeater that would have been our first choice, K6LY 2m in Monterey, is currently not functioning properly. The plan we put together in-



involved a ham each with the CERT vehicle and the Equine Evac vehicle, as well as a ham posted at the base of Whitehouse Canyon road where repeater access would hopefully be better. Our wonderful team of Debra, KM6HGI; Christian, AC3T; Sebastian, KK6FBF; Karen, KM6SV; and net control Roberta, AJ6KN shared equipment around, taught each other to reprogram PLs, tried different repeaters and simplex frequencies, and even put up an Ed Fong roll up J-pole on a 20+ ft mast in order to keep communications lines open. Thankfully, the extra backup plan of trying some HF frequencies proved unnecessary as WB6ECE 2m repeater on Mt Toro worked fairly well at the base of Whitehouse Canyon and simplex was able to relay from there into the canyon. The entire team was flexible and rolled with the communications and other plan changes until we got to something that worked.

So in the end, a request for CERT support turned into a three organization activation with two different objectives that were both successfully executed on, delivering evacuation orders and livestock evacuation. It is a testament to the great relationships that our volunteer DSW organizations have with each other and our drive to do the job correctly, not just to do the minimum requested that led to a very smooth, successful activation in Whitehouse Canyon on Jan 3, 2023.



Working with a Fire Department

JoMarie, KM6URE, Scribe

All power, phone, and internet connections had been out in areas of Lompico in Zayante Canyon since the December 31st storm. There was an anticipated heavy storm to arrive 1/4/23 which included extreme winds. Fire Chief Dan Walters requested ARES for deployment Wednesday, 1/4/23 to establish emergency communications among the three locations of the Zayante Fire department. It was expected residents may walk to one of the stations to request assistance.

Station 1 is the main station and at 7700 E. Zayante Rd and across from the Trout Farm. Station 2 at 10610 Lompico Rd in Lompico is an equipment garage but without power or phone. Station 3 is the most remote at 15585 Upper Zayante Rd at White Rock Road. It is also an equipment garage.

After a situational briefing, Bob, KO6XX and Kathy, KE6VTY in Sophie (the RV) were escorted to Station 3. Christian, AC3T using his 4-wheel drive car, deployed to Station 2. Both Stations 2 and 3 had planned to deploy through the entire activation as there was a chance the road may become impassable with predicted heavy rains. Ann, KEBQA, JoMarie, KM6URE and Ryan, KI6UAP agreed on a shift schedule at Station 1. Roberta, AJ6KN monitored WR6AOK along with Sam, WB6RJH.

Communications were established on the SLV radio club repeater, WR6AOK. Stations 2 and 3 used mobile rigs with an external antenna. Station 1 used a HT with a mag mount on a cookie sheet. WR6AOK did lose its power around 5pm when the storm was starting to ramp up. It continued to work as it does have battery back-up.

The storm came and went rather

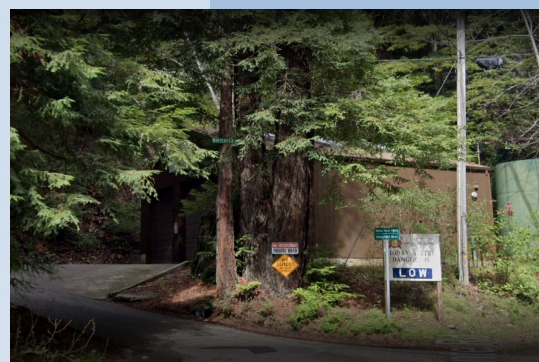
quickly and the Chief opted to demobilize us at 2100. Some trees did fall on wires between Stations 2 and 3 cutting off the Station 3 from the other stations to the south. The only way out

was Upper Zayante to Summit road to Highway 17. The utility engine staged at Station 3 was requested to return to Station 1. Bob and Kathy opted to stay put for the night and be escorted out in the am. The only communication they had was using the ham radio. JoMarie monitored WR6AOK for the night in case of any needs arose. Bob and Kathy were escorted out the next morning without incident. Christian from Station 2 was able to return to his home after the demobilization.

The Fire Station's staff were exceedingly welcoming and supported the efforts. It was very apparent the comradery and supportive nature of all the staff within the Zayante Fire District. ARES appreciated the request for assistance.



Zayante Fire Station #2



Zayante Fire Station #3

Situational Awareness and Options

Stephen, KM6NEP, Safety Officer

In chatting with my co-workers dispersed throughout the US, Mexico and Canada I mentioned my daily practice during the series of atmospheric river storms.

For me using the assessment list to the left, on Monday, January 9th 2023 had these results ...

MY ASSESSMENT LIST

1. Check the weather
2. Check evacuation status online (<https://aware.zonehaven.com/>)
3. Check the home outside for ponding-flooding, streaming, erosion-slides, leaning or fallen trees
4. Check for power outage at home and at work ([PGE Emergency Site - Outage Center](#))
5. Check road conditions ([QuickMap \(ca.gov\)](#))
Note: Santa Cruz CHP office is at Freedom and Hwy1. If there is an icon there, click on it to list the overall road closures for the county.)
6. Check local news (KSBW, Sentinel, Pajaronian, FB like Aptosia) or twitter feeds (@Cal_OES, @sccounty, @NWSBayArea, @FireDispatchSC, @CALFIRECZU, @SantaCruzPolice, @WatsonvillePD, @CHPscrz, @SantaCruzSO1)

► Weather: Non-stop rain all night and this morning, this is a rare thing in California. (Note appropriate song, "It never rains in Southern California").

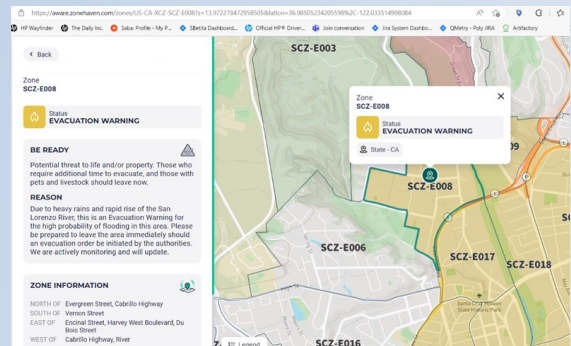
► Evacuation Status: The plant (my work) is in evacuation zone SCZ-008. The area is at Evacuation Warning stage. When the river floods, there is no other way out of the area but Hwy 9, no alternative routes.

► Home status: Some leaning trees but not towards home or work sheds.

► Power Outage: None at work zone and none at home.

► Road Conditions: CalTrans clearing logs in the the San Lorenzo River blocked up at Hwy 1 crossing.

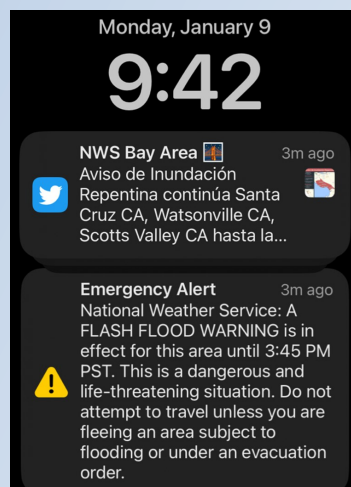
► Emergency Alert just received. Looks like today is "do not move unless there is an emergency". The Emergency Alert was the



final deal breaker in thinking about leaving the house to go to work that day.

Days later I had a power outage at home but power at work. That day I used a green bottle propane stove to heat water for coffee and oatmeal at home, and then went to work. Work to constantly assess your situation and to advance it.

I realized working with others, item 4 for the home could be expanded to also checking water, gas, and sewage. These are all the sub-systems needed to run a home. At work, I found co-workers bringing their families into work during the day as their neighborhood was without power for days. They



needed the relief.

As I and Sebastian, KK6FBF have said, know your exits. Which in some ways can be know your options or find out what they are.

Stay safe and vigilant of the conditions out there.



Hours Corner

December finished with 799.5 volunteer hours being reported. The 2022 total 11974 hours. And we know there were many unreported hours. Keep up all the great work and thank you for volunteering. Those who enter hours are eligible for the month drawing of a fabulous prize. Please remember to enter your hours on the form on <https://xczcomm.com/index.php/hours-reporting/>

Trainer Observations

Jim, N6EWP, Meeting trainer

Wow, it's been a crazy 2+ weeks of rain and runoff. Did you get your radios out and at least listen to the ARES chatter? I was using three handhelds to let me monitor 3 different repeaters at the same time, and I know that others did likewise. Some operators deployed to the various Zayante Fire stations to provide station to station communications for the firefighters. Other ARES folk were evacuated, and Dan N6RJK and Liz W6LTS made it on the KTVU news: www.ktvu.com/news/felton-grove-residents-bracing-for-the-next-round-of-storms-after-destructive-flooding.

People all over are still waiting for power to be restored and roads repaired. This has been the kind of disaster for which ARES was formed. Did you feel like you were ready?

Did you get involved (including monitoring)? The best kind of training is actual on-the-job experience followed up by strengthening what was weak. Our ARES meeting this month will be a wrap-up on what happened.

That's the meeting training this month -- just solidifying what each of us learned from experience this time.

It's a bit hard to know what kind of meeting training is needed most. I'm hoping to transition to more of an "Ask Dave" (QST magazine) format where you send me your questions and I'll pick some to answer myself or more likely find someone else who knows more than I do to answer it.



Resources

- Website: <https://xczcomm.com/>
- Reporting volunteer hours: <https://xczcomm.com/index.php/hours-reporting/>
- Upcoming events: <https://xczcomm.com/index.php/calendar-of-events/>
- Facebook page: <https://www.facebook.com/ARES-of-Santa-Cruz-County-Ca-296232310799866>
- Facebook group: <https://www.facebook.com/groups/431308973875528>
- PIO Articles: <https://arrlsantaclaravalley.org/news/> or <https://xczcomm.com/index.php/news/>
- XCZ Comm You Tube: <https://www.youtube.com/channel/UCHZH8TU5gh4SqHTPXSWolPA>
- Submitting deployment documents: **send in PDF form to** EOC.ARES@santacruzcounty.us and your appropriate EC (Bob: KO6XX@slvares.org)
- Submitting personal information such as DSW application, personal data update, education certificates: email K6PDL@ARRL.net, KM6SV@SLVARES.org, and EOC.ARES@santacruzcounty.us,

Photo reminders

Next time you participate in a radio related activity, take a picture or two of yourself, your friends, your equipment, or your environment (preferably a combination of these factors) and send it to KM6RMN@SLVARES.org and KN6IAB@SLVARES.org.

With your permission, Allison will use the material to make creative Facebook posts. Extra points for natural action poses, equipment still-life, or well-framed presentations. Even a funny or awkward moment is useful. If your shots involve other people, try to get permission or identifying information so Allison can make sure it is all right to use their appearance in her posts.



Reminders

- ▶ AECs submit articles for newsletter by the Sunday before the meeting to KM6URE@slvares.org
- ▶ Net Control sign-ups will be taken during the monthly meeting. Everyone is encouraged to take this on this role.

Neighborhood Radio

Dawn, KM6RME, Administration



As odd as it may seem to us all, not everyone finds radio use fun and interesting. **Almost everyone does recognize the importance of emergency communication.** Recently more and more people are finding that the cell phones and land lines they rely on do not always work in an emergency or disaster. This is particularly the case in areas where cell service is not directly available anyway and people

rely on technology to create their connectivity. When the power and internet go out, what can they do?

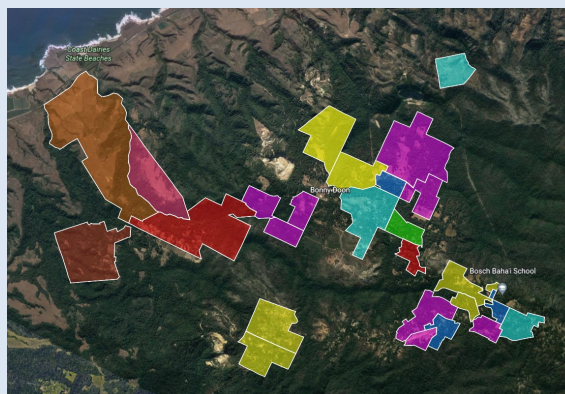
Ham operators, in conjunction with their neighbors, have been creating neighborhood communications groups. In Bonny Doon twenty-one neighborhoods have organized so that the neighbors can communicate with each other in emergencies. As hams know, everyone must be on the same frequency to talk to each other. This was achieved by having everyone purchase the same Btech V1 MURS radio. This radio is inexpensive, requires no license and is extremely easy to use. This is also the radio that CERT uses, and the radios are programmed with CERT channels. Community organizers help neighbors acquire and learn to use the radios and schedule practices. Ham operators (who may also be the organizer) can tie together the neighborhoods and relay emergency information to the appropriate agency.

In the process of organizing, a number of inactive hams became interested again and several people found that radios are a great hobby and went on to get their amateur license to support their neighborhood. There is at least one ham operator for all but two neighborhoods.

Most people still don't think that radios are fun. Participation in exercises and practices can be very low. When the power goes out or the road is blocked and the water is rising and the phones don't work, the radio gives people emergency communication and security, and everyone appreciates the capability.

Check in with your neighbors. They might be interested!

For a lot of information about Bonny Doon Neighborhood Communications, go to bonnydoonradio.org. Check out the fly over, it is amazing!



Disaster Spurs Creativity

Lisa, KN6IAB; Alex, AJ6QY, Roxy, WE6C

As in many parts of the county, the recent series of storms wreaked havoc on roads, power, and communications infrastructure in Bonny Doon. The first atmospheric river quickly sent trees toppling into power lines and onto roads. As the storm progressed trees continued falling and mudslides started blocking and undermining the roads. Before many repairs could be made, the next drenching storm barreled in, compounding the problems.

During the utility outages, neighbors started communicating on their MURS radios and neighborhood ham operators started communicating with each other on local portable repeater W6TUW. However, with so much going on the rumors were flying fast and furious. Conditions were changing hourly as crews played a game of whack-a-mole, making repairs and opening roads, while new incidents sprang up and closed them again! At one point there was no

way out of Bonny Doon.

That's when Roxy, WE6C, realized what was needed was a map where people could go to see what roads were open. Since Roxy couldn't find one with timely information, she took the initiative and created one. Roxy wanted to model behavior she had observed Russ Mackey (Silent Key) doing, calm reporting with facts, and simple terms so everyone can understand. Using google maps, she overlaid the map with data from official sources, from the internet and the radio and with people's reports when out on the roads. The map was color coded with open, closed, and caution areas, and even included links to photos and comments from contributors. For those who needed to get in and out of the area it was hugely helpful, and the community loved it.

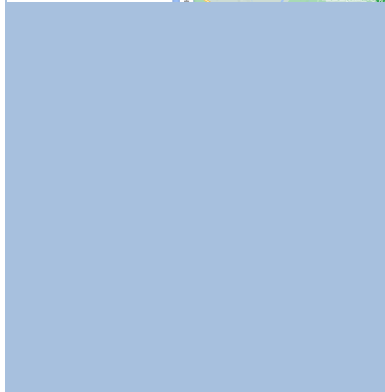
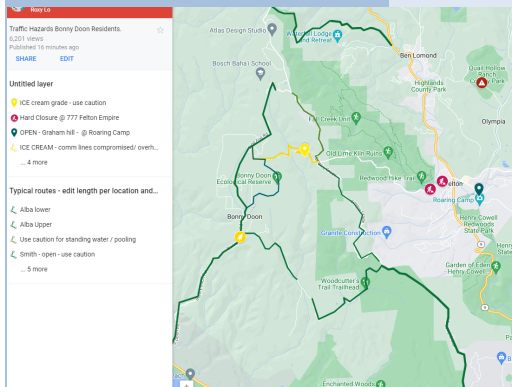
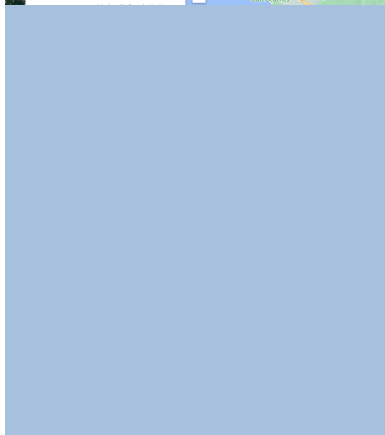
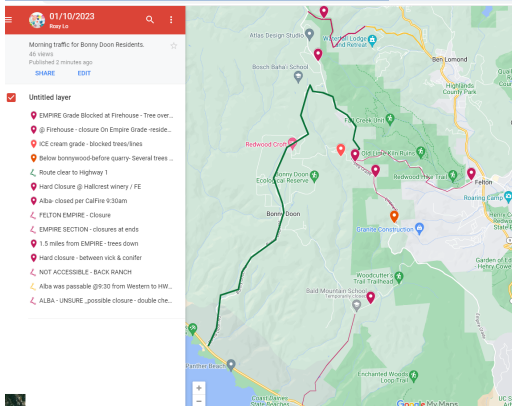
Using google maps was good because the input method was easy to use and straight forward. Lessons learned from practicing PSPS drills, learning to take the time/ date and high level facts were exercises practiced in ARES that gave Roxy confidence to do this. Roxy initially wanted a visual aid to keep track of all the roads open and closed to get a clear exit route in her head. The other issue was that one of the neighborhood radio groups was severely trapped by trees and downed lines so their only method of info outside of their street was through Roxy using their MURS channel.

The challenges were having an authoritative voice, without being too official, however. To be trusted meant ensuring closures were reopened only when barricades were removed and safety assessment were completed. Facebook comments were copied with time/date on incidents so people could use it to help them assess their own routes. Verification were from in-person reports and listening to ROADS. Timely info required having back up help which meant scheduling others when Roxy had to go to work.

What a great example of using many of the ARES skills we practiced to do what was needed for our specific emergency. To date there have been over 6000 views.

Thank you Roxy for leading the way!

Link: <https://www.google.com/maps/d/viewer?mid=1UX5YIuepoOJ-8KR5aY1C-thiLg6TiMDk&fbclid=IwAR0z9msHJVOj9UQEYftuatD411IID2O7TDFACoZLRIHFFDK3OmLI5ikHe60&ll=37.03854259304717%2C-122.05586474105166&z=12>



Org. Positions

- DEC
John / N6QX, jfgerhardt@gmail.com
- Assistant DEC
Gary / K6PDL, K6PDL@arrl.net
- Assistant DEC and Deputy EC
Karen / KM6SV, KM6SV@slvares.org
- Operations and Events
Dan / N6RJX, N6RJX@slvares.org
- Webmaster
Nate / KM6THA, KM6THA@gmail.com
- Administration
Dawn / KM6RME, KM6RME@slvares.org
- Safety Officer
Stephen / KM6NEP, KM6NEP@slvares.org
- Public Information officer
Allison / KM6RMN, KM6RMN@slvares.org
- Net Manager
Roberta / AJ6KN, AJ6KN@slvares.org
- EC Loma Prieta
vacant
- EC Coastal and SLV
vacant
- AEC-Antenna Specialist
vacant
- AEC-CERT Liaison
Liz / W6LTS, W6LTS@slvares.org
- AEC-Coastal
vacant
- AEC-Education Coordinator
Bill / AJ6CQ, wtyler@gmail.com
- AEC-Logistics
{temp vacant}
- AEC- Meeting Trainer
Jim / N6EWP, N6EWP@arrl.net
- AEC-MRC Liaison
John / KN6DCA, drjohnrx54@gmail.com
- AEC-New Member Liaison
Alex / AJ6QY, AJ6QY@slvares.org
- AEC-Packet Radio /Digital
Sebastian / KK6FBF, Sebastian@steinhauer.info
Ryan / K16UAP, K16UAP@gmail.com
- AEC-Photographer
Lisa / KN6IAB, KN6IAB@slvares.org
- AEC-Scribe
JoMarie / KM6URE, KM6URE@slvares.org
- AEC-SLV Safety Officer
Tom / KK6NMZ, KK6NMZ@slvares.org
- AEC-SLVEN Liaison
vacant
- AEC-Video Production Team
vacant

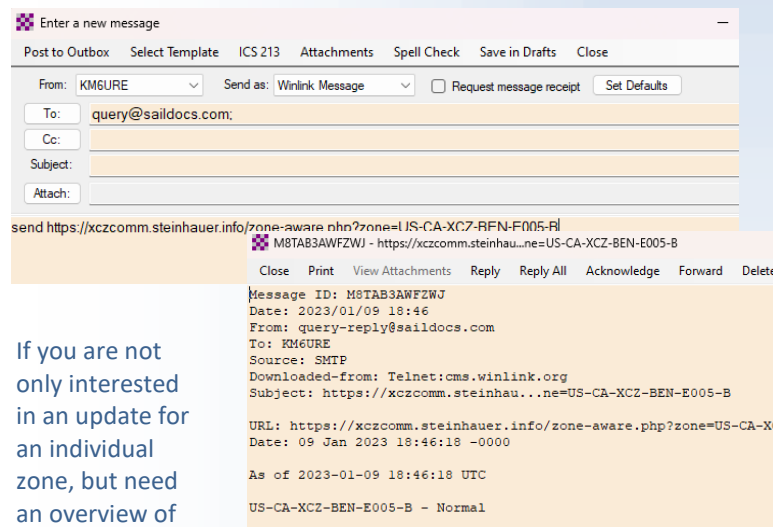
Winlink and saildocs to obtain critical evacuation information

Sebastian, KK6FBF, Packet Radio/Digital

Situational awareness is critical in disaster situations, when activated or just as your friendly neighborhood ham – help others understand the situation, it can save lives, and they might take a bit more kindly to your antennas in the future. saildocs.com is a service that can be easily used to access simple websites via winlink. This can be very handy when you are trying to access critical information in a time of disaster.

In order to get status information for XCZ (Santa Cruz Country) evacuation zones you can simply complete the following:

1. Write a winlink message (or normal email) to query@saildocs.com
2. Leave the subject line empty, note you will get an alert about the empty line
3. In the body of the email write “send [https://xczcomm.steinhauer.info/zone-aware.php?zone=US-CA-XCZ-\[ZONEID\]](https://xczcomm.steinhauer.info/zone-aware.php?zone=US-CA-XCZ-[ZONEID])” (without the quotes, and make sure you replace [ZONEID] with your zonehaven zone id).



If you are not only interested in an update for an individual zone, but need an overview of county wide

situation you can put “send <https://xczcomm.steinhauer.info/xcz-evac-status.txt>” into the body of your message.

Beyond the status of the local evacuation zones it can be vital to know the status of local state routes. In Santa Cruz these are 1, 9, 17, 129, 152 and 236. Outside our county 5, 35, 92, 101 and 280 are relevant evacuation routes.

For example, to receive the status of Hwy 9 via winlink and saildocs.com you can send an email with the body “send <https://xczcomm.steinhauer.info/road-status.php?roadnumber=9>” and in order to receive a daily update at 04:00 for the next 30 days you can subscribe using the command “sub <https://xczcomm.steinhauer.info/road-status.php?roadnumber=9> time=04:00 days=30”. Please note that the times are UTC times – not local times in our area.

If you need help getting started on winlink – please don’t hesitate to reach out to Roberta, AJ6KN or Sebastian, KK6FBF

Santa Cruz County ARES Purpose

- We serve the public, not our egos and the best service we can render in a truly major event. To provide and distribute a corps of trained operators into the right places of the scene in that first, critical 48 hours (sometimes weeks).
- We are not Fire personnel, Police Officers, Sheriff's Officers, or any other authority. We are volunteers who care about our communities by using our emergency communication skills.
- Before volunteering we first take care of ourselves, immediate family, friends, and some of our relatives.
- We value the contributions that everyone makes, irrespective of license class, years of experience, or the price tag of your radio.

Ham Radio's Motto

"When all else fails – ham radio works". That is because, when all the normal communication systems stop working, Ham Radio is still in operation, helping people, conveying messages, and sometimes, even saving lives.

Found on the Web

Allison, KM6RMN, Public Information Officer

As promised, I bring you three websites that provide the latest news about space weather. Why would you want to know the weather in space? Because it has a huge impact on propagation conditions. It affects GPS navigation and power grids, and other communication modes as well. Which would mean a higher probability of being called into service with our gear.

Space Weather Woman

Tamitha Skov makes space weather events and the surrounding science accessible to the layperson. Her presentation is similar to terrestrial weather forecasts on network television. Her channel also provides in-depth videos about solar and geomagnetic phenomena, presented in plain English. If you want to learn exactly HOW solar activity affects radio propagation, check out her mini courses. She traces the process from creation of solar flares to their impact on the ionosphere. Watch how she brings out her toy slinky to illustrate magnetic fields!



Get instant access to the latest space weather info by supporting her on Patreon. For as little as a dollar a month, you can get the news right when it's happening. Patreon: <https://www.patreon.com/SpaceWeatherWoman> Her videos eventually make it to her free YouTube Channel. Forecasts are posted in just a few days, and mini courses some weeks or months later. YouTube: <https://www.youtube.com/@TamithaSkov>

Space Weather

If you prefer your forecasts in webpage/blog format, check this page out. You can drill down on more specific aspects of solar activity, and there's often a cool video and a photo gallery of the latest newsworthy events. Along with the news, find informative web links at the bottom of the page that cover all space phenomena that has an impact on the earth. <https://spaceweather.com/>

Space Weather Prediction Center

We all know National Oceanic and Atmospheric Administration (NOAA) is the best source of weather information around. It covers space weather too. It's a great site for getting a quick read on approaching solar events. It's got all the charts and graphs, too. Links to specific interests, such as satellites, emergency management, and yes, radio communications help you find refined information fast. There are also numerous links to precise forecast data and information in the blue field at the bottom. Try clicking on "Alerts, watches and warnings" for instance. <https://www.swpc.noaa.gov/>

These sites are good bets for getting accurate assessments of any geomagnetic events coming our way. If you start seeing newscasts saying, "the sky is falling!" about an M-class solar event, check these pages to get the real story, which most likely will be "don't freak out, this is normal." SpaceWeather will show you what's newsworthy, NOAA will provide all the background information you could ever want, and Tamitha will teach you the science behind it.